

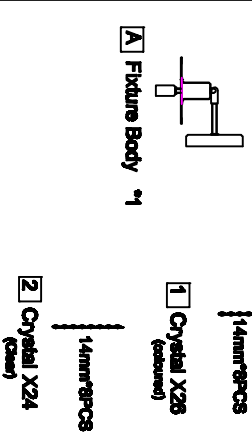
# Assembly Instruction Sheet #S-4281W For Style 4281W

**Tools Required:** Flathead screwdriver, Phillips screwdriver, pliers, wire cutters, wire strippers, electrical tape, safety glasses.  
**Light Source:** (1) G9 Candelabra Base Bulb 40W Maximum (Not Included).  
**Preparation:** Identify and inspect all parts before beginning installation. Check package content list and diagrams below to be sure all parts are present. If any parts are missing or damaged, do not attempt to assemble, install, or operate the fixture. Contact customer service for replacement parts.

### ⚠ Warnings and Cautions

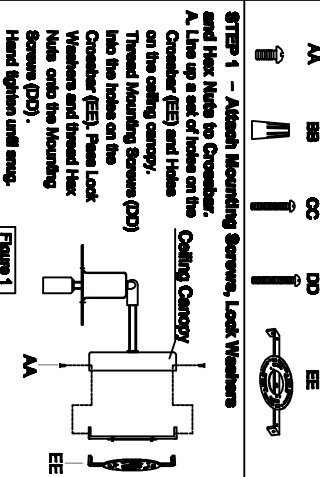
Turn off electricity at circuit breaker or main fuse box before installation. Consult a licensed electrician if in doubt. These instructions are provided for your safety. It is very important you read them completely before installing the fixture. We strongly recommend that a licensed, professional electrician perform the installation. Disconnect fixture from power source before replacing bulbs. Make sure bulbs are given sufficient time to cool before removal.

### Package Contents

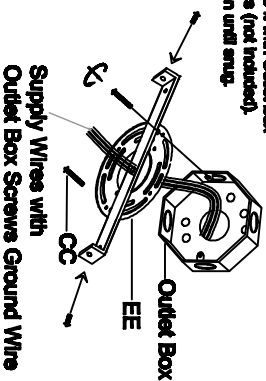


### Hardware Contents

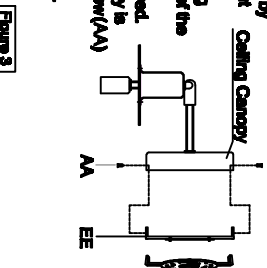
PART	DESCRIPTION	QUANTITY
AA	Screw	2pcs
BB	Wire nut	3pcs
CC	Outlet Box Screw	2pcs
DD	Mounting Screw	2pcs
EE	Crossbar	1pc



**STEP 2 - Attach Crossbar to Outlet Box.**  
 A. Pass the supply wires through the Crossbar (EE). Attach the Crossbar (EE) to the Outlet Box (CC) with the head of the Green Ground Screw facing you. Secure it with Outlet Box Screws (Not Included). Tighten until snug.



**STEP 3 - Fit Ceiling Canopy to Mounting Assembly.**  
 A. Fit the ceiling canopy to mounting screws (DD) and secure with screw (AA). Note: The ceiling canopy should be snug against the ceiling and the screw (AA) should be snug against the ceiling and the screw (AA) if not, adjust the length of the Mounting Screws (DD) by unscrewing the Hex Nut and Lock Washer and then screwing Mounting Screws (DD) in or out of the Crossbar (EE) until the correct length is achieved. Once the ceiling canopy is secure, remove the screw (AA) and ceiling canopy and proceed to Step 4.



**STEP 4 - Wire Connections**  
 A. Use standard wire connectors (not included) to make all wire connections. Twist connections until wires are tightly joined together. Wrap each connection with approved electrical tape and carefully stuff all the connected wires into the Outlet Box.

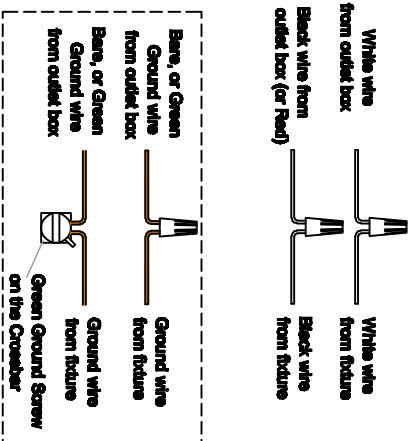


Figure 4

**STEP 5 - Install Ceiling Canopy to Ceiling.**  
 A. Carefully tuck all wires into the outlet box and position the ceiling canopy of the Fixture Body (A) over the outlet box. Align the holes in the ceiling canopy with the Mounting Screws (DD). Secure with Screw (AA) and hand tighten until snug.

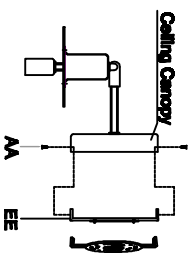


Figure 5

**STEP 6 - Install Crystal and Bulbs.**  
 A. Install bulbs onto sockets and push snug into place.  
 B. Attach Crystals to the Fixture Body (A).

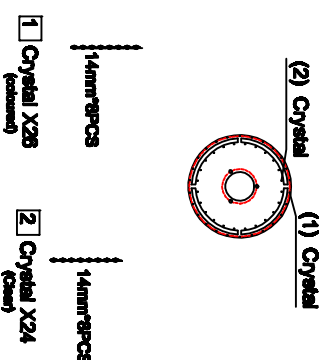
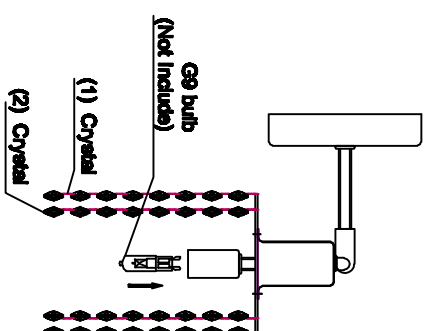


Figure 6